

OPERATING AND MAINTENANCE INSTRUCTIONS

P/N 104749-001

MODEL 1450 PEL-PORT BLOWER

TABLE OF CONTENTS

<u>SECTION</u>		<u>PAGE NUMBERS</u>
1.0	GENERAL	1
2.0	SAFETY PRECAUTIONS	1
3.0	OPERATING INSTRUCTIONS	1
4.0	SPECIFICATIONS	2
5.0	PARTS LISTS	3
6.0	EXPLODED VIEW DRAWING	4

T. A. PELSUE COMPANY

2500 S. Tejon St., Englewood, CO 80110

Phone: (303) 936-7432 or (800) 525-8460

Fax: (303) 934-5581

PELSUE 1450 PEL-PORT BLOWER

1.0 GENERAL

1.01 This manual covers the description, operation and maintenance of the Pelsue Model 1450 Pel-Port Blower.

PLEASE TAKE THE TIME TO READ THIS MANUAL BEFORE OPERATING BLOWER.

1.02 The 1450 portable blower, is specifically designed to produce a current of fresh air. This blower is powered by a 3.5 HP gasoline engine.

2.0 SAFETY PRECAUTIONS

FOR YOUR SAFETY-

READ THE FOLLOWING SAFETY PRECAUTIONS.

2.01 Do not use the blower for other than its intended use.

2.02 Do not wear loose clothing that can become entangled in operating machinery. Do not operate blower without inlet or outlet screen guards in place. (If guards are missing or damaged, contact factory for replacements).

2.03 Do not place fingers or any other object through inlet or outlet screens.

2.04 To prevent exhaust fumes from being pulled into the blower intake, never run the engine in an enclosed area and always position the blower intake into the wind.

2.05 Always be sure to shut down the engine and extinguish all smoking materials before filling the fuel tank.

2.06 Always be sure to fill the fuel tank outdoors or in a well ventilated area. Never start the engine if fuel has been spilled until the spill has evaporated and there is no smell of gas fumes.

2.07 Never store or use gasoline within 50 feet of anything which may produce a spark or flame.

2.08 MAINTENANCE & REPAIR

Be sure the spark plug wire is disconnected from the spark plug before doing any maintenance or repair work on the blower.

2.09 EXPLOSIVE ATMOSPHERE. Never use this blower in any explosive environment.

2.10 The engine of this unit has been modified with a stop on the throttle lever. Removal of this stop may lead to an "overspeed" condition of the blower, which will result in the deformation of the blower wheel and possible injury.

2.11 SAVE THESE INSTRUCTIONS.

3.0 OPERATING INSTRUCTIONS

3.01 Position the blower on a flat, hard surface with the blower inlet pointed into the wind, clear of any loose objects that could be pulled into the blower inlet. Check the blower inlet and outlet screen for obstructions and damage.

3.02 Check the fuel and oil levels in accordance with the attached engine manual and connect any blower hoses to be used.

3.03 To start, position the choke lever to CHOKE. (Choke must fully close).

3.04 Move engine throttle control to the preset operating position.

3.05 Grasp rope handle and pull slowly until resistance is felt. Then pull cord rapidly to overcome compression, prevent kickback and start engine.

3.06 After the engine has started, move choke lever to RUN position.

3.07 Do not leave blower operating while unattended.

3.08 When blower operation is no longer required, move engine throttle control to IDLE or SLOW position. Then move engine throttle control to STOP or OFF position. Do not move choke control lever to CHOKE to stop engine. Backfire or engine damage may occur.

3.09 Allow the engine to cool at least 2 minutes before refueling or storage.

4.0 PRODUCT DESCRIPTION:

The Pelsue Model 1450 Pel-Port Blower

4.01 DIMENSIONS & WEIGHTS

Width: 18.00" (457 mm)
Length: 17.00" (432 mm)
Height: 18.00" (457 mm)
Weight: 45 lbs. (20 kg)
Hose: 8" (203 mm)

4.02 MODEL SPECIFICATIONS & PERFORMANCE:

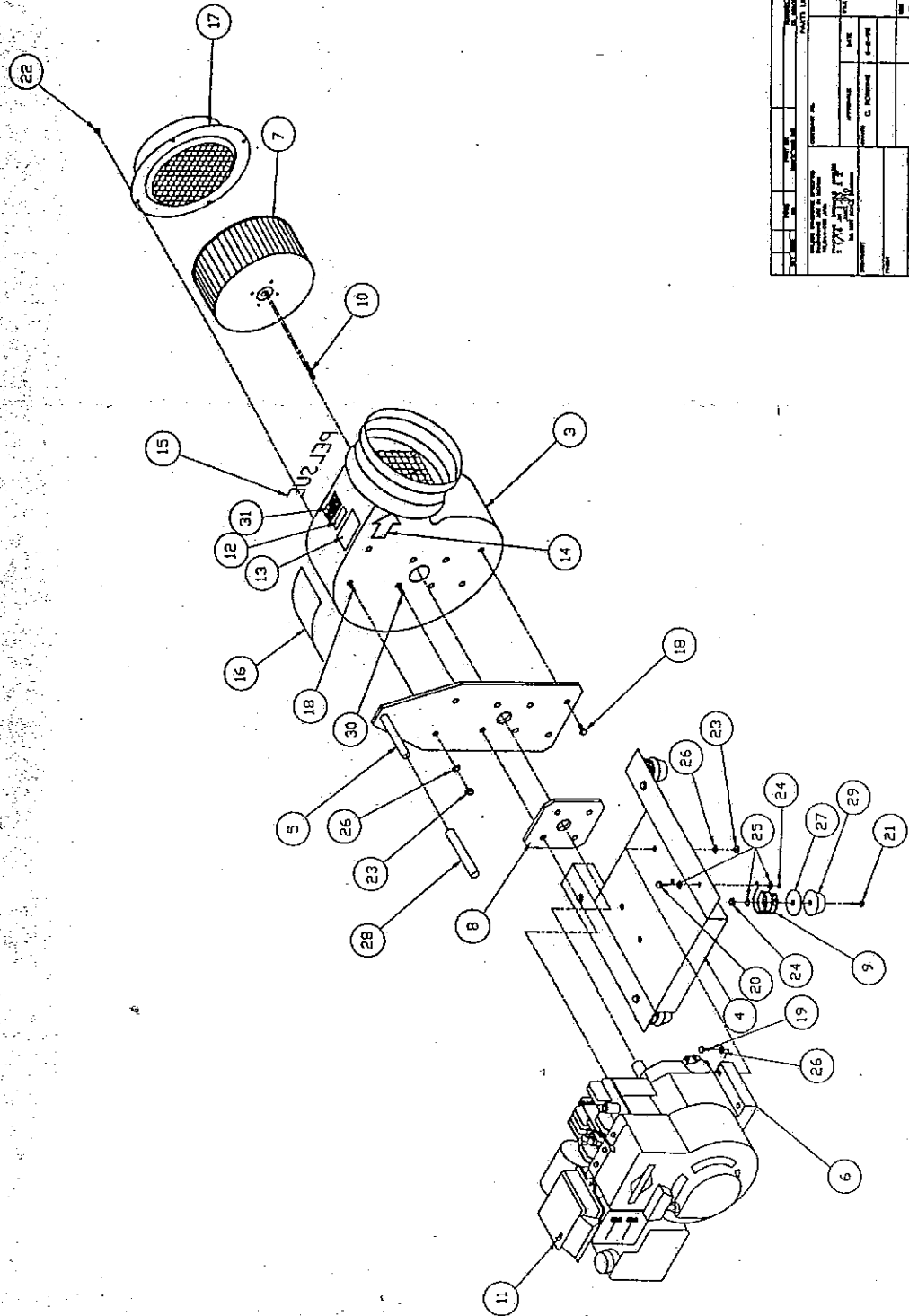
Fuel:	Gasoline
H.P.:	3.5
Free Air:	1526cfm (43.21 m ³ /min.)
One 90° Bend:	1360cfm (38.51 m ³ /min.)
Two 90° Bends:	1255cfm (35.54 m ³ /min.)
Speed:	3600 rpm

MODEL 1450 BLOWER

5.0 PARTS LIST

<u>ITEM #</u>	<u>PART #</u>	<u>DESCRIPTION</u>	<u>QTY.</u>
3	114759-001	Housing Weldment	1
4	112921-001	Base Weldment	1
5	112922-001	Handle/Mounting Plate	1
6	123545-001	Engine - Briggs & Stratton, 3.5 HP	1
7	102672-001	Wheel, Blower	1
8	114151-001	Small Shim Plate	1
9	44H-101001	Spring	4
10	106407-001	Key	1
11	103059-001	Decal - Oil Warning	1
12	104602-001	Decal - "CAUTION: FOR OUTDOOR USE ONLY"	1
13	110123-001	Decal - "WARNING DO NOT OVER SPEED"	1
14	111837-001	Decal - Directional Arrow	2
15	111566-001	Decal - Pelsue Logo	1
16	113775-001	Decal - I.D., Serial & Operating Instructions	1
17	113238-001	Suction Adapter	1
18	100157-007	Screw - 5/16 -18 x 3/4 Lg.	4
19	100157-012	Screw - 5/16-18 UNC x 1-3/4	4
20	101427-002	Screw - 1/4-20 UNC x 3/4	4
21	100604-010	Screw - 1/4-20 UNC x 1	4
22	111984-001	Screw - 10-24 UNC x 3/8	4
23	100060-011	Locknut - Hex, 5/16-18 UNC	8
24	100060-010	Locknut - Hex, 1/4-20 UNC	8
25	100050-009	Washer -Flat, 1/4"	12
26	100050-010	Washer - Flat, 5/16"	12
27	100187-015	Washer - Fender, 3/8"	4
28	114564-001	Bicycle Grip x 4-1/4" Lg.	1
29	100188-002	Rubber Foot	4
30	102250-004	Screw - 5/16 - 24 x 1.00" Lg.	4
32	100187-001	Washer - Fender, 1/4"	8

REV	DESCRIPTION	DATE	BY
1	ISSUED FOR PRODUCTION	1-15-54	J. H. HARRIS
2	REVISION TO DRAWING PLATE/ANNUAL REPORT	1-15-54	J. H. HARRIS



REV	DESCRIPTION	DATE	BY
1	ISSUED FOR PRODUCTION	1-15-54	J. H. HARRIS
2	REVISION TO DRAWING PLATE/ANNUAL REPORT	1-15-54	J. H. HARRIS

PROJECT NO.	112009-001
DATE	1-15-54
BY	J. H. HARRIS
CHECKED	
APPROVED	
DESIGNED	
DRAWN	
SCALE	AS SHOWN
TITLE	ASSEMBLY DRAWING MODEL 1450 BLOWER
REV	1 OF 1

ALL DIMENSIONS ARE IN INCHES UNLESS OTHERWISE SPECIFIED