

Part #500242-HD1

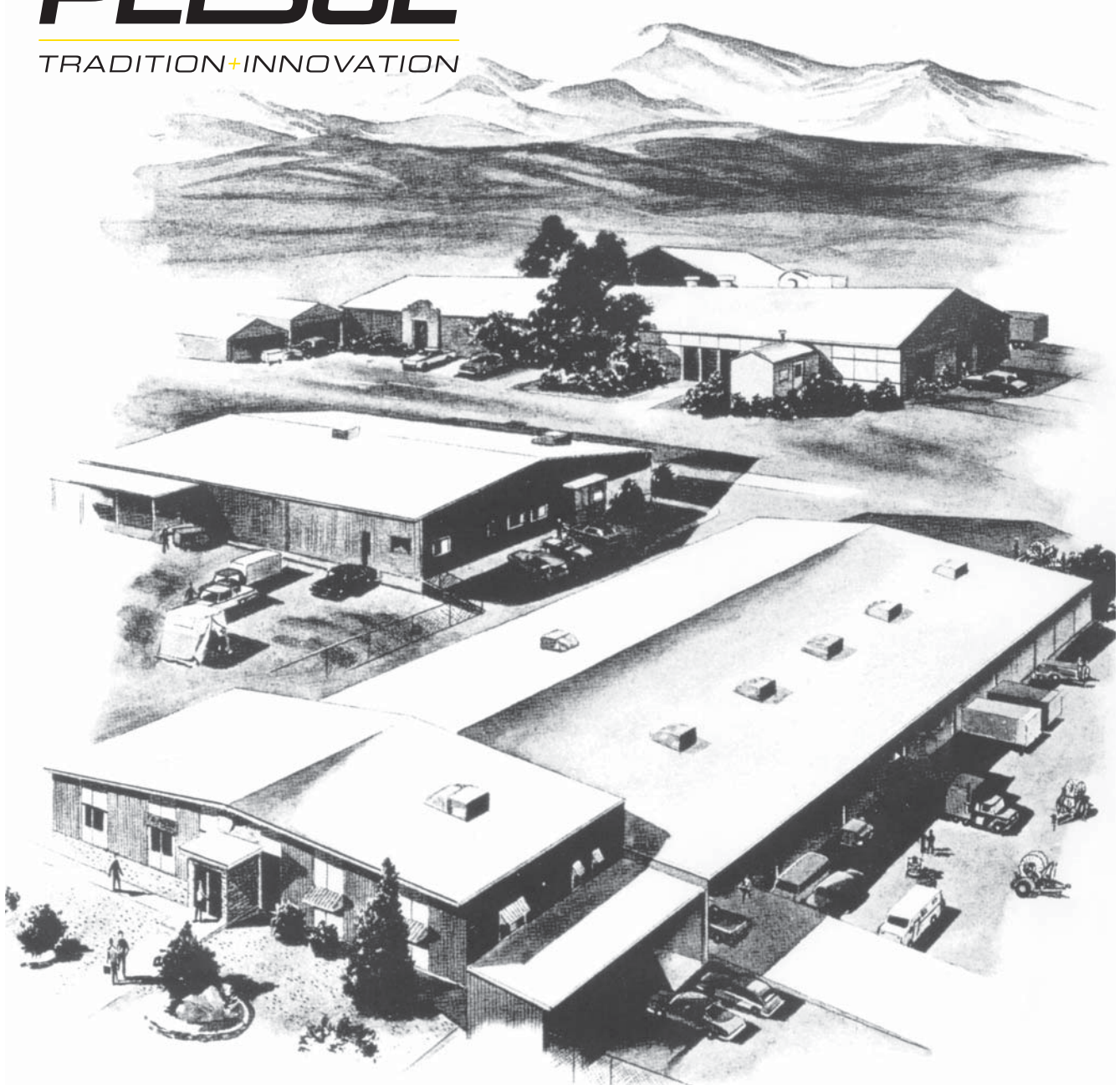
Product Manual:

**HDK Series
Davit Kits, Heavy Duty**




PELSUE®
ISO 9001 Certified

T.A. Pelsue Company
2500 South Tejon Street
Englewood, Colorado, USA 80110
Tel. 800-525-8460 or 303-936-7432
Fax. 303-934-5581
Internet: www.pelsue.com
Email: sales@pelsue.com



Since our inception in 1963 – the T.A. Pelsue Company has designed and manufactured high quality equipment to improve the personnel efficiency and working conditions in various underground, confined, and outdoor areas.

Founded by T. Allen Pelsue, the company has established a continuing reputation for excellence in the production of fine products for a broad spectrum of industry throughout the world.

Now, in our second generation of family direction, continued commitment to innovation and quality makes Pelsue a leading source of equipment for many types of confined spaces. We specialize in safety, retrieval, fall arrest, ventilation, cable placing, splicing, and maintenance nationally and abroad. With more than 70,000 square feet of facilities available, Pelsue continues the dedication that has made us pre-eminent in this field.

Table of Contents

Section	Description	Page #
1.0	General Information	5
1.1	Quality Policy	
1.2	Pelsue Product Warranty	
2.0	Introduction & Product Information	7
2.1	Serial Number	
3.0	Configuration & Assembly	8
3.1	Label Locations	
4.0	Safety	10
4.1	Warning Statement	
4.2	Safety Alert Symbol	
4.3	General Safety Information	
4.4	Operating Safety	
4.5	Maintenance Safety	
4.6	New Operator Safety Information	
5.0	Product Operation	13
5.1	Product Description & Capabilities	
5.2	Product Installation & Set-Up	
6.0	Maintenance & Inspection	19
6.1	Maintenance	
6.2	Inspection	
6.3	Inspection Log	
7.0	Storage	23
8.0	Contact Information	23

1.0 General Information

1.1 Quality Policy

T.A. Pelsue Company

Quality Policy

OUR GOAL IS THE PURSUIT OF NEVER-ENDING IMPROVEMENT IN PRODUCT QUALITY AND BUSINESS SYSTEMS.

METHODS TO BE EMPLOYED IN ATTAINING THIS GOAL WILL INCLUDE NEW PRODUCT QUALITY PLANNING, EMPLOYEE TRAINING, AND UTILIZATION OF EMPLOYEE INVOLVEMENT GROUPS TO SOLVE PROBLEMS.

IN AN INCREASINGLY COMPETITIVE MARKETPLACE, ENSURING CUSTOMER SATISFACTION IS ONE OF THE DIFFERENTIATORS THAT SETS YOU APART FROM THE PACK AND YIELDS A COMPETITIVE ADVANTAGE.

THEREFORE, WE WILL SUPPORT TOTAL CUSTOMER SATISFACTION BY IMPLEMENTING THE **ISO 9001 QUALITY SYSTEM** AND PROVIDING THE NECESSARY ATMOSPHERE AND TRAINING TO NURTURE THIS CONCEPT THROUGHOUT OUR ORGANIZATION.

WE WILL MAKE EVERY BUSINESS DECISION AS THOUGH THE QUALITY OF THE PART OR SERVICE PROVIDED WAS DESTINED FOR OUR OWN OR OUR FAMILY'S USE. WE WILL ALWAYS THINK **QUALITY FIRST**.

EVERY T.A. PELSUE COMPANY EMPLOYEE IS EXPECTED TO COMMIT TO THIS PHILOSOPHY IN THE PERFORMANCE OF HIS OR HER DAILY TASKS.

QUALITY FIRST!

T.A. PELSUE COMPANY SENIOR MANAGEMENT TEAM

1.2 - Pelsue Product Warranty

Pelsue products are designed and engineered to perform as stated in published specifications. Quality materials and workmanship are used in the manufacture of this product. With regular maintenance and proper care, Pelsue equipment provides many trouble free hours of operation.

The T.A. Pelsue Company warrants to the buyer that the Hoist Product furnished will conform to specifications and will be free from defects in material and workmanship from the date of shipment to the original buyer, for a period of 1 year (12 months). In the event of failure of any components of a Pelsue product within the warranty period, service must be pre-approved by the T.A. Pelsue Company, and service must be performed by the T.A. Pelsue Parts and Service Department in Englewood, Colorado, or at the option of the T.A. Pelsue Company, service may be performed at any designated service center, which may include any authorized service center for the component manufacturer. Unauthorized repairs will not be covered by this warranty.

Damage or failure due to misuse, mishandling, or unauthorized modifications will not be covered by this warranty. Unless otherwise agreed, the T.A. Pelsue Company shall repair or replace the defective components within (30) calendar days of notice of failure. T.A. Pelsue Company's obligation hereunder, shall be limited to the repair or replacement of the product or component as set forth above and shall not include any liability whatsoever for damages caused by such failure, including, but not limited to consequential or incidental damages flowing from use or lack of use of product.

Any replacement, repair, modification, installation, or other service performed by the T.A. Pelsue Company shall be warranted by the remainder of the unexpired period of the warranty, or for a period of (90) calendar days, whichever is longer.

All materials or parts returned for credit or warranty shall be returned only with prior approval, and will be subject to factory inspection before credit is allowed. Parts claimed defective will be replaced upon request and will be invoiced as purchased, subject to credit when the parts claimed to be defective have been received and examined by the factory.

This warranty is expressly in lieu of all other warranties expressed or implied, including any warranties of merchantability or warranties of fitness for any particular use and all other obligations or liabilities in connection with the sale of this equipment.

T.A. Pelsue Company, 2500 South Tejon Street, Englewood, Colorado 80110, 800-525-8460

2.0 - Introduction & Product Information

Congratulations on your choice of a **Pelsue HDK Series Davit Kit** to compliment your confined space entry/retrieval and/or fall arrest system. This equipment has been designed and manufactured to exceed confined space and fall arrest regulations and requirements in order to meet the needs of the discriminating operator and those tasked with ensuring personnel safety when working at heights or within confined spaces.

Safe, efficient and trouble-free operation and maintenance of the system requires that anyone who will be operating, maintaining, or inspecting the equipment, read, understand and follow all the operation, safety, maintenance, and inspection instructions contained within this manual. This manual covers the Pelsue HDK Series Davit Kit. Use the Table of Contents as a guide to find specific information.

Keep this manual available for future reference and for usage as a tool in the instruction of new operators. Establish a regular training program for all operators. Establish a regular maintenance and inspection program to keep the equipment in top condition.

WARNING

This product is a part of a man rated confined space entry/retrieval system. The user must read, understand and follow the instructions contained in this manual for each component or total system before using this equipment. Establish an appropriate training, maintenance and inspection program for your people and the equipment. Failure to follow these instructions could result in serious injury or death.

2.1 - Serial Number

Product Serial Number

Always give your dealer the serial number of your Pelsue confined space entry/retrieval or fall arrest product when ordering parts or requesting service or other information.

The serial number decal is permanently embossed with a serial number. A separate serial number decal will be affixed to the Offset Arm, Elbow and Centerpost, and will appear as shown in Figure 2a. Figure 2b shows the approximate locations of the Serial Number Decals. A space has been provided below for the recording of the serial numbers for future reference. Please circle the model that was purchased.

S/N: _____

MODEL #: _____

DOM: _____

Figure 2a:
Serial Number Decal

MODEL: **HDK4248**

Serial Number : OFFSET ARM - _____
 ELBOW - _____
 CENTERPOST - _____

Date of Manufacture (DOM):
 OFFSET ARM - _____
 ELBOW - _____
 CENTERPOST - _____

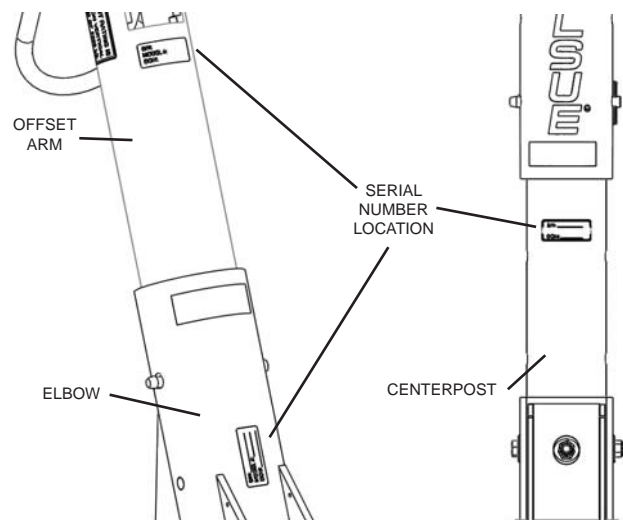


Figure 2b:
Serial Number Decal Location

3.0 - Configuration & Assembly

Upon initial receipt of the HDK Series Davit Kit, inspect the packaging for any evidence that the product may have been damaged in shipment. While unpacking the product, inspect all of the components for damage. If damage to any of the components is discovered, DO NOT USE THE PRODUCT! Alert the shipping carrier immediately of the damage to the shipment.

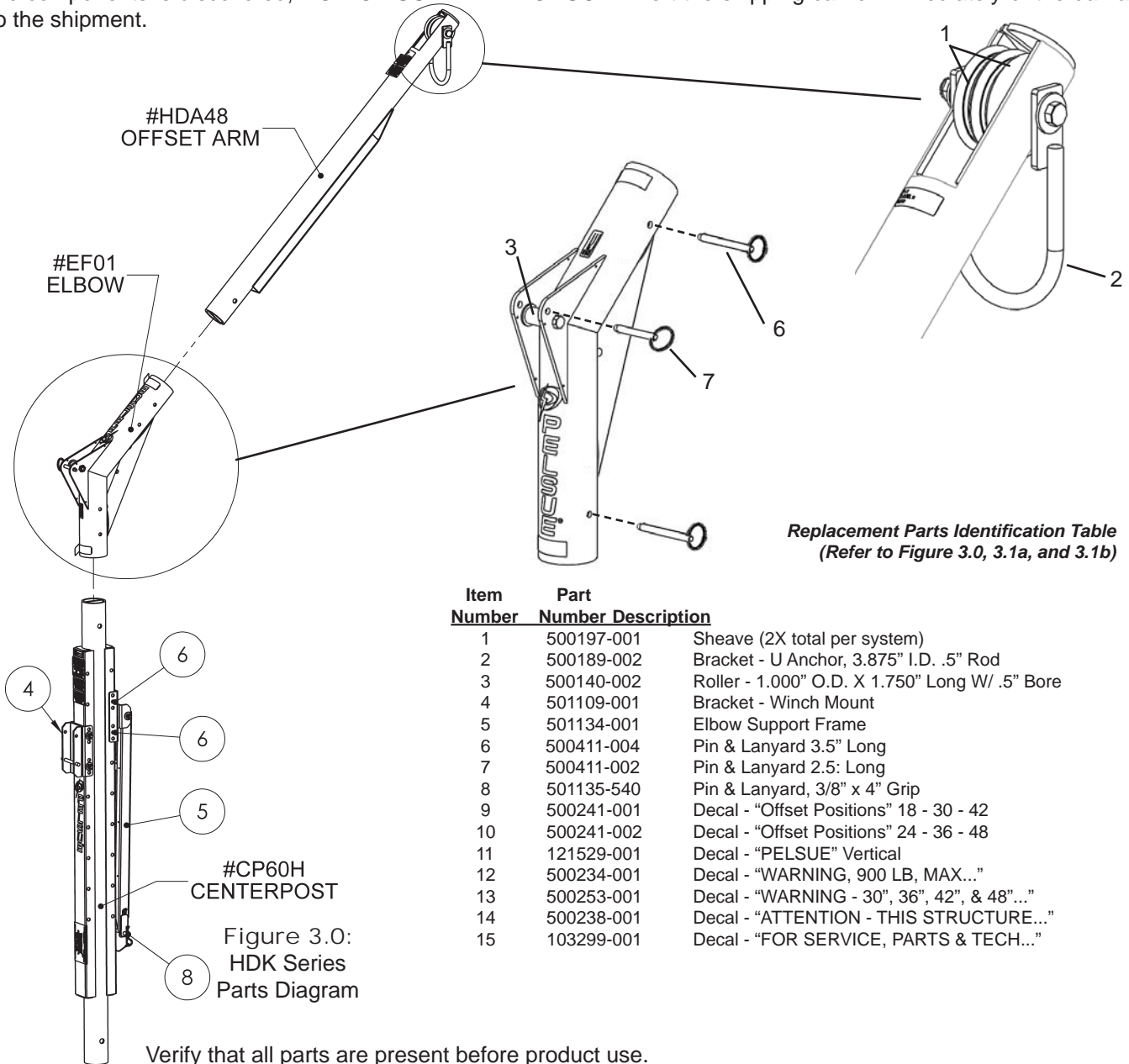


Figure 3.0:
HDK Series
Parts Diagram

Verify that all parts are present before product use.

1. The HDK Series Davit is shipped in three components; the offset arm (#HDA48), the elbow (#EF01), and the centerpost (#CP60H) which are all pre-assembled.
2. The offset arm and the centerpost are designed to be inserted into the elbow as shown. Check for fit between the offset arm, elbow, and centerpost upon initial inspection. Ensure that all pins can be installed in their proper place.
3. The Winch Mounting bracket is fastened in a default location from the factory, but can be placed along the centerpost vertically wherever desired.
4. A "PW" Series winch mounting bracket comes standard on the centerpost, but a variety of mounting brackets compatible with other devices and manufacturers is available from the T.A. Pelsue Company.
5. Refer to Section 5.2 of this manual for specific assembly instructions.

**Refer to parts list above for common replacement parts. If replacement parts are required, they can be ordered from the T.A. Pelsue Company at 800-525-8460.

3.1 Label Locations

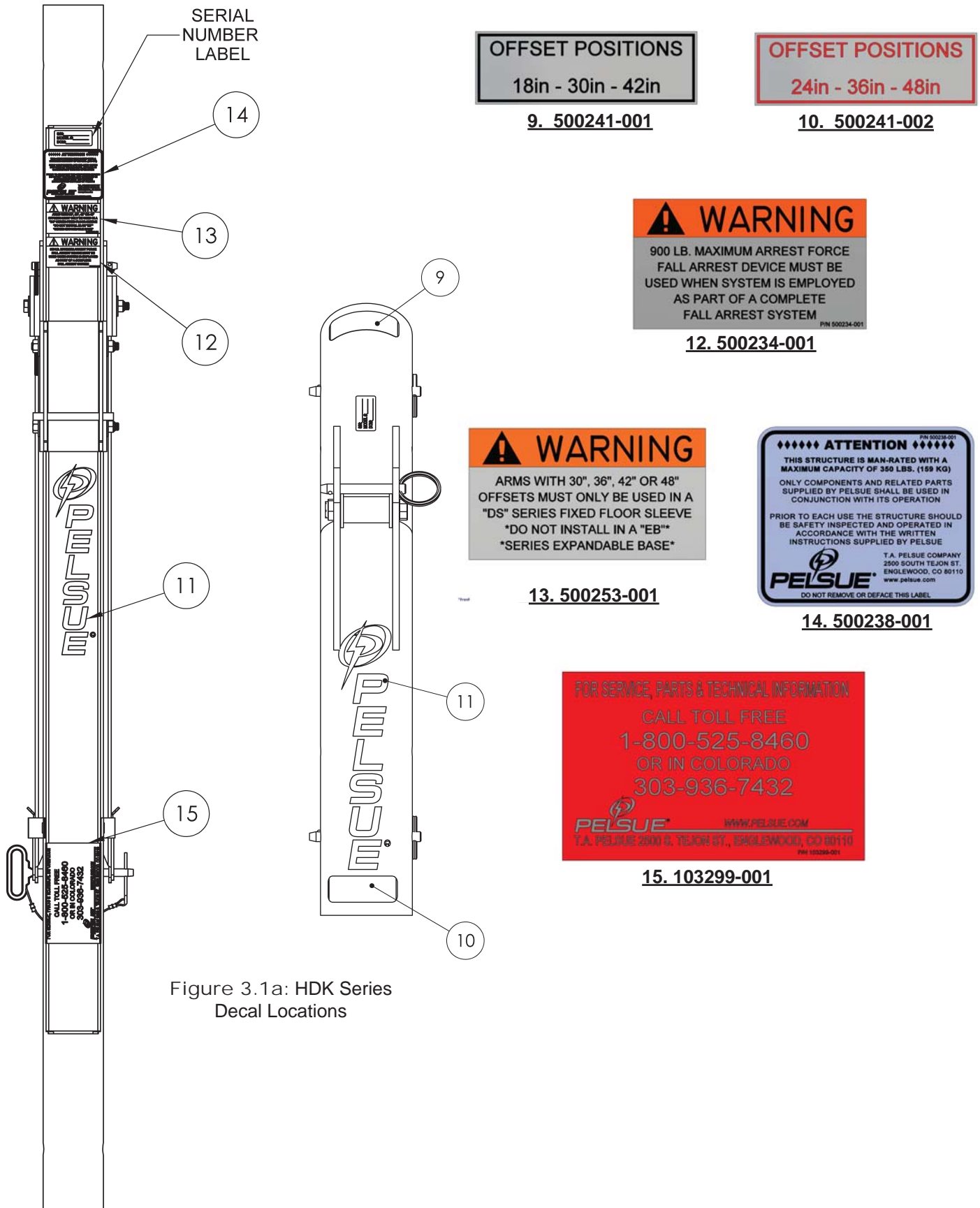


Figure 3.1a: HDK Series Decal Locations

4.0 - Safety

The following section will address the safety precautions which must be adhered to when working with Pelsue confined Space Safety & Fall Arrest equipment such as the HDK Series Davit Kit. Any user must familiarize themselves with the information in this section before utilizing the equipment.

SIGNAL WORDS:

Note the use of the signal words **DANGER**, **WARNING** and **CAUTION** within the safety messages. The appropriate signal word for each message has been selected using the following guidelines:

- DANGER-** Indicates an imminently hazardous situation that, if not avoided, will result in death or serious injury. This signal word is to be limited to the most extreme situations or for hidden or unseen hazards.
- WARNING-** Indicates a potentially hazardous situation that, if not avoided, could result in death or serious injury and includes obvious and hidden hazards. It may also be used to alert against unsafe practices.
- CAUTION-** Indicates a potentially hazardous situation that, if not avoided, may result in minor or moderate injury. It may also be used to alert against unsafe practices.

You are responsible for the safe operation, maintenance and inspection of your Pelsue HDK Series Davit Kit. You must ensure that anyone who will operate, maintain, inspect or work around the equipment be familiar with the operating and maintenance procedures and related safety information contained in this manual. This manual will take you step-by-step through the workings and capabilities of the HDK Series Davit Kit and alert you to all good safety and operating practices while using the system.

Remember, you are the key to safety. Good safety practices not only protect you but also the people around you. Make these practices a working part of your safety program. Be certain that everyone operating this equipment is familiar with the procedures recommended and follows safety precautions. Remember, most accidents can be prevented. Do not risk injury or death by ignoring good safety practices.

- System owners must give operating instructions to operators or employees before allowing them to use the equipment and at least annually thereafter.
- The most important safety device on this equipment is a safe operator. It is the operator's responsibility to read and understand all safety and operating instructions in the manual and to follow them. Most accidents can be avoided.
- A person must understand the operation of this equipment and be trained in its usage before operating the equipment. An untrained operator exposes himself and others to possible serious injury or death.
- Do not modify the equipment in any way. Unauthorized modification may impair the function and/or safety and could affect the life of the equipment.
- Think SAFETY! Work SAFELY!

4.1 - Warning Statement

WARNING!

Products manufactured or sold by the T.A. Pelsue Company are intended for use by professionals trained and experienced in the use, inspection and maintenance of these products.

Paraprofessional users such as volunteer rescue workers and sportsmen involved in risk sports such as climbing and caving will be held to the same standard of experience and training as professionals.

Technical rescue, repelling, climbing and the training involved are hazardous activities. Each situation has its own unique conditions and must be evaluated. Effective risk management comes from experience, proper training and good personal judgement.



4.2 - Safety Alert Symbol

SAFETY ALERT SYMBOL

This Safety Alert symbol means **ATTENTION! BECOME ALERT! YOUR SAFETY IS INVOLVED!**

The Safety Alert symbol identifies important safety messages on your Pelsue Retrieval Product and in the manual. When you see this symbol, be alert to the possibility of personal injury or death. Follow the instruction in the safety message.



Why is this symbol important to you?

- 3 BIG Reasons:**
- Accidents Disable and Kill.**
 - Accidents Cost You Money.**
 - Accidents Can Be Avoided.**

4.3 - General Safety Information

1. Read, understand, and follow the Product Manual and all safety signs before using, maintaining or inspecting the equipment.
2. Refer to and follow applicable standards and regulations. Comply with requirements of local regulations for your applications.
3. Establish an equipment-use training program for all employees. Only trained, competent persons shall use the equipment. An untrained operator is not qualified to operate the system.
4. Have a first-aid kit available for use should the need arise and know how to use it.
5. Provide a fire extinguisher for use in case of an accident. Store in a highly visible place.
6. Install and properly secure all guards and shields before operating.
7. Wear appropriate protective gear. This list includes but is not limited to:
 - A hard hat
 - Protective shoes with slip resistant soles
 - Heavy gloves
 - Protective clothing
 - Face Protection
8. Review and follow the Pre-Operation Checklist before using a component in the system or system itself.
9. Establish a regular maintenance and inspection program with your equipment and maintain detailed records.
10. Review safety related items and operating instructions with all personnel on a regular basis.

4.4 - Operating Safety

1. Read, understand and follow the Product Manual as well as all printed warnings that may be located on the product itself before using, maintaining or inspecting the equipment.
2. Train all operators before allowing them to use the product. An untrained operator exposes themselves, bystanders and workers to possible serious injury or death.
3. Visually inspect the product and all auxiliary components and equipment before using. Correct any problems before using the equipment.
4. Securely anchor the product before using.
5. Use only certified anchor and connector components in your system.
6. Use only an approved full body harness for the workers.

4.4 - Operating Safety (continued)

7. Always work in teams. One person is to work in the confined space (entrant) and the other is to attend to the entrant (attendant). Pelsue recommends an additional attendant/rescuer for stand-by in case of an emergency.
8. Do not exceed the capacity of the system at any time (see section 5.1).
9. Establish a regular training program for all operators and potential rescuers.
10. Establish a detailed inspection program for your equipment and document the findings. Return the equipment to the manufacturer for repair if any problems are found.
11. Plan your work program before starting. Have the required people, equipment and procedures readily available in order to safely complete any task prior to commencing.
12. Do not use the equipment around physical or environmental hazards. This list includes but is not limited to:
 - Corrosion that may affect the structural integrity of the lifeline or other components.
 - Chemicals which can degrade components in a manner which can not be visually identified.
 - Toxic gases: Rescuers or workers can be killed in toxic environments.
 - Heat or elevated temperatures.
 - Moving machinery: Workers or auxiliary equipment can be contacted by or pulled into moving components.
 - Sharp edges: Workers or the rescue equipment can be injured by or damaged by sharp edges or components.
 - Electrical hazards: Stay away from power lines or components carrying electrical power.
 - Overload: Do not overload the system at any time during operation (see section 5.1).
 - Follow confined space regulations and standards.

4.5 - Maintenance Safety

1. Read, understand and follow the Product Manual as well as any printed warnings that may be present on the product before using, maintaining or inspecting the equipment.
2. ANSI and OSHA require a regular inspection program for all confined space entry/retrieval equipment and to maintain documented results of these inspections. Follow the inspection procedure contained in this manual and use the inspection form to document the results (see section 6.0).
3. Keep instructional and safety signs clean and legible at all times. Clean or replace as required.
4. Remove the equipment from service if a problem is found during the inspection. Return to an authorized repair depot or the factory for service.

4.6 - New Operator or Owner

The Pelsue HDK Series Davit is designed to assist a person/entrant in entering a confined space, to assist in exiting, if required, and provide an anchorage point for a personal fall arrest system. Every new operator must read, understand and follow the instructions in this Product Manual. No person should be permitted to use the equipment without prior proper training. The training should be reviewed with experienced operators on a regular basis. At regular intervals, perform a detailed inspection of the equipment and document the results. Remove the product from service if any deficiencies are found. Alterations or misuse of this equipment or failure to follow instructions may result in serious injury or death.

It is the responsibility of the owner's organization to ensure that the proper training is provided to all operators of any fall arrest device before they start working with the equipment. Follow all safety instructions exactly. Safety is everyone's business. By following recommended procedures, a safe working environment is provided for the operator, bystanders and the area around the work site. Untrained operators are not qualified to operate the equipment.

Many features incorporated into this equipment are the result of suggestions made by customers like you. Read this manual carefully to learn how to operate & install the equipment safely and as intended. By following the operating instructions in conjunction with a good maintenance program, your product will provide many years of trouble free service.

5.0 - Product Operation

The following section will address the capabilities and the general operation of the Pelsue HDK Series Davit Kit. The instructions contained within this section should be adhered to each and every time the product is used. Any person tasked with installing or operating the piece of equipment should be familiar with these procedures.

5.1 - Product Description & Capabilities

The Pelsue HDK Series Davit Kit is built from carbon steel & structural aluminum. The HDK Series Davit Kit is specifically designed to provide an offset overhead point for the mounting of a personnel lifting, lowering, or retrieval device and/or a personal fall arrest system. All specifications, instructions, and procedures provided within this manual or upon Pelsue Specification Documents are based upon and only valid for usage with Pelsue DS Series Sleeves or other approved bases and accessories. A T.A. Pelsue Company representative or another qualified individual must specifically verify compliance with any other base or sleeve.

#HDK4248 Reversible Elbow Offset Davit:

General Specifications

- Minimum Offset - 42"
- Maximum Offset - 48"
- System Weight - 92 LB. (41.7 kg)
- Load Capacity (@ End of Davit Arm) - 350 LBS. (159 KG) Personnel-Rating

Compliance

- One Person "Single Point" Fall Arrest Anchorage as defined by: **AS/NZS 1891.4:2009.**
- Fall Arrest Anchorage for one person as defined by **OSHA 1926 Subpart M & ANSI A10.14**
- Refer to loading diagrams for proof loads

Materials & Construction

- Centerpost - Carbon Steel (Hot Dip Galvanized & Powder-coated)
- Elbow - Structural Aluminum (Powdercoated)
- Offset Arm - Structural Aluminum (Powdercoated)
- Fasteners - Plated Alloy Steel

Features:

- The davit assembly is designed to rotate freely (360°) within Pelsue DS Series Sleeves (rotation may be limited by external obstructions)
- Winch mount is height adjustable on the center post via two mounting bolts
- System contains two pulleys in the offset arm as well as a Universal Overhead Anchor Loop for fall arrest system attachment

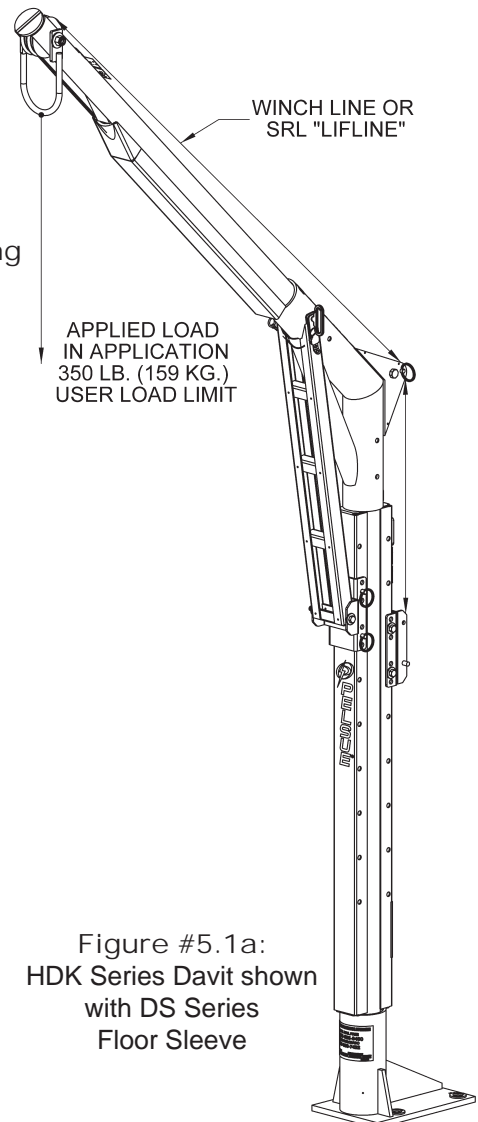


Figure #5.1a:
HDK Series Davit shown
with DS Series
Floor Sleeve



! CAUTION ! - The user must ensure that the ground area or base structure utilized for installation of the sleeve is capable of withstanding the weight of the system combined with the system proof loads in order to retain the stated compliance of the entire system.

! CAUTION ! - The user must ensure that all fasteners are locked in place in order to retain the stated compliance of the entire system.

5.1 - Product Description & Capabilities (continued)

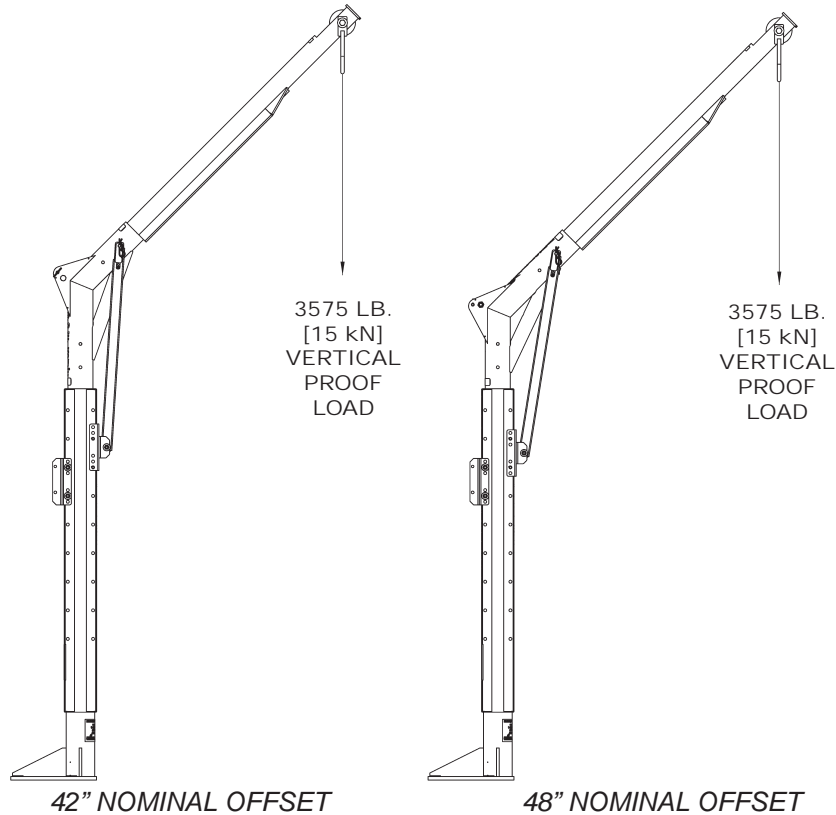


Figure #5.1b: HDK4248
Proof-Loading

5.2 - Product Installation & Set-up

Prior to Operation, the HDK Series Davit should be configured and prepared according to the following guidelines.

1. Pre-Operation Inspection:

It is necessary to perform a visual inspection prior to each time using the product. If deficiencies are found, remove the product from service and contact the T.A. Pelsue Co. regarding repair. The following checklist coupled with *Figure #5.2a* should be used as a guide to determine whether the equipment is in acceptable operating condition prior to usage. Equipment that is not in good condition can endanger the safety of the entrant and attendant during use.

The Pre-Operation Visual Inspection is not limited to, but must include the following items;

- Check that the product has no structural defects, such as dents, bends, cracks, or fractures.
- Ensure that all product rating & warning labels are clear and legible.
- Check that the Offset Arm and the Centerpost slide freely into the Elbow.
- Check that the "U" Anchor Bracket, Cable Roller, and Pulleys are securely fastened and in working condition.
- Check that all fasteners (i.e. pins, screws) have not been damaged and are secured to the davit structure.
- Check that the Winch Mounting Bracket is securely fastened and in the desired position.

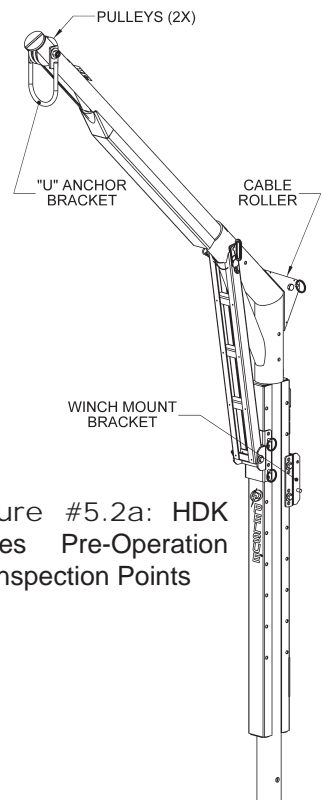
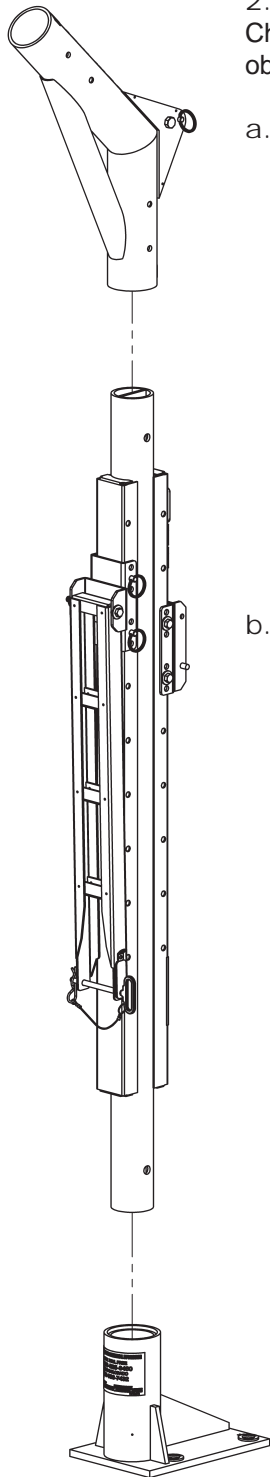


Figure #5.2a: HDK
Series Pre-Operation
Inspection Points

5.2 - Product Installation & Set-up (continued)



2. Setup of HDK Series Davit Kit:

Choose a location where installation will provide suitable proximity to the work area yet minimize obstructions during use and in the event a rescue is necessary. Once a location is chosen;

- a. First, ensure that the DS Series Sleeve or Other Approved Base that will be used in conjunction with the HDK Series Davit is securely fastened and/or installed. Ensure that the supporting structure can handle the load imparted to it by the system.



! WARNING ! - The rating of some sleeves/bases may supersede the rating of the davit system. The complete system should only be utilized to the capabilities of the lowest-rated component. A qualified individual must review to ensure that the system is utilized within its intended performance envelope.



! WARNING ! - The user must ensure that the sleeve into which the davit is to be installed, and the structure to which the sleeve is secured are both capable of supporting the proof-loaded davit system, or the revised rating as decided by a qualified individual.

- b. After verifying the strength of the sleeves/base and the supporting structure, insert the Centerpost into the sleeve. The Elbow can now be placed onto the centerpost and pinned in place. Ensure that the proper elbow leg is placed onto the centerpost so as to result in the desired offset. (Placing the short elbow leg on the centerpost will result in the longer offset and placing the long elbow leg on the centerpost will result in the shorter offset.) Refer to the labels located on the #EF01 elbow for the nominal offsets.

Elbow Securing
Pin location

Elbow Securing
Pin



Figure #5.2c: Securing the elbow to the centerpost

Figure #5.2b: HDK Series Centerpost & Elbow Installation

5.2 - Product Installation & Set-up (continued)

- c. When a winch or other mechanical device is to be installed at the rear of the centerpost, it is easiest to reeve the cable prior to installing the davit's offset arm. Mount the winch according to the manufacturer's instructions (The T.A. Pelsue Company can provide various adapters for multiples brands of winches and SRL device) then "pay-out" approximately 4 feet of winch line taking care not to damage or kink the cable.
- d. Secure the winch cable to the elbow's roller by removing the pin, then placing the cable directly over the roller and then capturing the cable against the roller by re-inserting the pin (refer to Figure #5.2e) .



Figure #5.2e: Securing the winch cable to the elbow roller



Figure #5.2d: Retrieval winch mounted at the rear of the centerpost

- e. Hold the offset arm vertically, with the pulleys at the upper end, and place the winch cable through the arms' cable slot and into the groove of one of the pulleys.
- f. Taking care not to twist or damage the winch cable, the offset arm can then be inserted into the elbow. The large slot & accompanying external brace must be downward when installing the offset arm into the elbow.



Figure #5.2f: Inserting the winch cable into the offset arm's pulley slot



Figure #5.2g: Installation of the offset arm

5.2 - Product Installation & Set-up (continued)



Figure #5.2h: Elbow support frame securing strap

- g. Allow the elbow support frame to pivot by unstrapping the retaining strap located at the base of the centerpost.



Figure #5.2i: Rotating the elbow support frame into position

- h. Remove the “T” Handle locking pin from the elbow support frame and rotate the elbow support frame upwards towards the elbow.
- i. The legs of the elbow support frame will straddle the elbow when rotated into position. Insert the “T” Handle hitch pin into the elbow support frame, using it to secure the offset arm, elbow, and elbow frame together. Insert the cotter retainer pin at the opposing side of the elbow.



Figure #5.2j: Pinning the offset arm, elbow & elbow support frame.



Figure #5.2k: Assembled Davit

5.2 - Product Installation & Set-up (continued)

3. Usage of the HDK Series Davit Kit:

The HDK Series davit kit must only be utilized by a competent person and within the capabilities of the system as reported within this document. Misuse of fall arrest and rescue equipment can result in serious injury and/or death. All potential users of this the HDK Series Davit must be trained in its operation and in the identification of potential hazards and defects.



! WARNING ! - Any lifeline attached to the HDK Series Davit must be connected incorporating a 900 LB. MAF (Maximum Arrest Force) Fall arresting Device.

When the HDK Series Davit is employed with other equipment as a total system, the total system must be rated according to and within the limitations of all equipment utilized within the system. A winch or Retrieval device may not share the same capabilities as the HDK Series Davit, the system must be rated to the limitations of the lowest rated component.



! WARNING ! - The HDK Series Davit must only be utilized by competent and/or qualified and properly trained individuals.

4. Disassembly of HDK Series Davit Kit:

- a. Disassembly of the HDK Series Davit, kit is the reverse of the above assembly steps.
 - Remove any additional device from the davit and properly stow the device.
 - Remove the pins connecting the Offset Arm to the Elbow and the Elbow to the Centerpost.
 - Remove the Offset Arm from the Elbow and the Elbow from the Centerpost.

6.0 - Maintenance & Inspection



MAINTENANCE & INSPECTION

1. Read, understand and follow the Product Manual and signs on the product before using, maintaining or inspecting the equipment.
2. ANSI and OSHA require a regular inspection program for all confined space entry/retrieval equipment and to maintain documented results of these inspections. Follow the inspection procedure contained in this manual and use the inspection form to document the results.
3. Keep instructional and safety signs clean and legible at all times. Clean or replace as required.
4. Remove the equipment from service if a problem is found during the inspection. Return to an authorized repair depot or the factory for service.

6.1 - Maintenance

For the most part, the HDK Series is intended to be a maintenance-free piece of equipment, however several steps can be taken to keep the system in top-notch working order and also extend the working life of the product.

Before Each Use:

1. Visual Inspection: Perform a complete visual inspection. Refer to section 6.2 for guidelines and take any maintenance steps that are necessary.

Annually:

1. Clean Product: Use a damp cloth and mild soap to clean the structure and labels of dirt and residue. Be sure the labels are legible (replacements are available from Pelsue)
2. Complete Inspection: Perform a thorough inspection, paying attention to the bullet points provided within section 6.2. Record results and keep documentation. A log has been provided in section 6.3 specifically for the recording of the dates & results of annual system inspections.

Periodic Factory Service Inspection: It is recommended that the product be serviced by a factory authorized service center or the manufacturer after a period of three years. Extreme working conditions may indicate the necessity to increase the frequency. Factory servicing shall include but not be limited to an intensive inspection and cleaning of all internal and external components. Failure to provide proper service may shorten product life and could endanger performance or function.

6.2 - Inspection

When completing an inspection of the HDK Series Davit, the following specific items should be checked;

1. Labels:

Check that all the labels are clean and legible. Clean the labels if any are dirty using mild soap and a damp cloth. Replace if any are illegible. Decals & labels provide valuable warning and caution information applicable to product usage and limitations, and should be visible and present at all times.

2. Pins & Fasteners:

Check that all screws and other fasteners are present and secure. Note that not all fasteners are tightened to their maximum allowable torque. This is done in order to allow for pivoting and folding motions in certain components. Over-tightening of fasteners can interfere with the operation of the device and can damage the structure. All fasteners on the HDK Series system are of a self-locking design. Bolt threads should extend all the way through their locking nuts. If any fasteners have appeared to "back-out" or loosen the product should be removed from service until the problem can be identified and corrected.

6.2 - Inspection (continued)

3. Roller, Pulleys, Anchor Bracket:

Ensure that the Roller and Pulleys are securely fastened and that they are not bent and there are no loose parts. Also, visually inspect the Anchor Bracket for any sign of deformation.

4. Structure:

The entire product structure should be checked for cracks, gouges, dents, bends or breaks. If there are major dents or any other structural damage, the unit should be removed from service and returned to the factory for repair.

- Pay special attention to weld locations: look for cracks or separation at the welds. Keep in mind the powder coating can age and crack, this normal paint cracking can be confused with structural cracking. If there is any uncertainty with regards to cracks, contact the Pelsue service department for assistance and/or recommendations
- Ensure that the Offset Arm and the Centerpost can move easily within the Elbow without obstructions. Binding of the tubes may be indicative of further structural deformation.

#HDK SERIES

Model Number :

Serial Number :

Date Purchased :

Place a check (✓) in the box if item is acceptable, place an x (X) in the box if item requires maintenance or repair

Date	Labels	Pins & Fasteners	Roller, Pulleys, Anchor Bracket	Overall Structure	Notes
Inspector (print & sign) :					
Inspector (print & sign) :					
Inspector (print & sign) :					
Inspector (print & sign) :					
Inspector (print & sign) :					
Inspector (print & sign) :					
Inspector (print & sign) :					
Inspector (print & sign) :					

6.3 - Inspection Log (continued)

Date	Labels	Pins & Fasteners	Roller, Pulleys, Anchor Bracket	Overall Structure	Notes
Inspector (print & sign) :					
Inspector (print & sign) :					
Inspector (print & sign) :					
Inspector (print & sign) :					
Inspector (print & sign) :					
Inspector (print & sign) :					
Inspector (print & sign) :					
Inspector (print & sign) :					
Inspector (print & sign) :					

7.0 - Storage

Prior to storage, the product should be thoroughly inspected and maintained. Repair or replace any worn or damaged components to prevent any unnecessary down time at the next use.

Follow this procedure:

1. Thoroughly clean the entire unit using a mild soap on the frame and labels.
2. Perform a complete inspection of the unit and document the results prior to storage.
3. The HDK Series system can be dismantled for storage if desired, follow the reverse of the steps given for assembly in section 3.0 of this manual.

8.0 - Contact Information

For More Information...



T.A. Pelsue Company
2500 S. Tejon St.
Englewood, CO 80110

Toll Free: 1-800-525-8460
Telephone: 1-303-936-7432
Fax: 1-303-934-5581

Website: www.pelsue.com

Email: sales@pelsue.com



T.A. Pelsue Company
2500 South Tejon Street, Englewood, Colorado, USA 80110
Toll free 800-525-8460 or 303-936-7432 Fax. 303-934-5581
Internet: www.pelsue.com Email: sales@pelsue.com