

OPERATING AND MAINTENANCE INSTRUCTIONS

P/N 118390-001

MODELS 309 and 310 PLANK SUPPORT

TABLE OF CONTENTS

<u>SECTION</u>		<u>PAGE NUMBERS</u>
1.0	GENERAL	1
2.0	SPECIFICATIONS	1
3.0	DESCRIPTION	1
4.0	PRECAUTIONS	1
5.0	OPERATING PROCEDURES	1-2
6.0	MAINTENANCE	2
7.0	PARTS LIST	3
	ASSEMBLY DRAWINGS (P/N 101320, 101320-1)	4-5

T. A. PELSUE COMPANY
2500 S. Tejon St., Englewood, CO 80110
Phone: (303) 936-7432 or (800) 525-8460
Fax: (303) 934-5581

PELSUE MODELS 309 AND 310 PLANK SUPPORTS

1.0 GENERAL

1.01 This manual covers the description, operation and maintenance of the Pelsue Models 309 and 310 Plank Supports.

1.02 The Models 309 and 310 Plank Supports are lightweight, portable, adjustable support to be installed in standard telecommunications and power utility vaults.

1.03 SAVE THESE INSTRUCTIONS.

2.0 SPECIFICATIONS

DESCRIPTION: Aluminum beam with
steel brackets

COLLAPSED LENGTH: 42"

EXTENDED LENGTH: 108"

WEIGHT: 13lbs. (each)

MAXIMUM LOAD: 500lbs. (each)

3.0 DESCRIPTION:

3.01 The 309 and 310 Plank Supports consist of a beam with a locking bracket on each end, and a strap to fix the Plank Support in the collapsed position.

3.02 The beam is comprised of three (3) rectangular, telescoping extruded aluminum tubes.

3.03 The brackets of the 309 Plank Support lock into the vertical struts used in telephone vaults. The brackets of the 310 Plank Support lock into the vertical struts used in power utility vaults.

3.04 An elastomer strap is provided to fix the Plank Support in the collapsed position for transportation.

4.0 PRECAUTIONS

4.01 Plank Support is constructed of electrically conductive material. Contact with live electrical wire can cause electrical shock resulting in injury or death.

4.02 Never use a damaged Plank Support.

4.03 Always be sure that brackets are securely locked into vertical struts.

4.04 Never exceed the load limit of the Plank Support.

4.05 Keep hands away from telescoping sections when extending or collapsing Plank Support.

4.06 Always fix Plank Support in the collapsed position before transporting.

5.0 OPERATING PROCEDURES

INSTALLATION:

5.01 Attach bracket on large tube of Plank Support to vertical strut in vault and lock bracket.

5.02 Release safety strap and extend Plank Support to vertical strut on opposite end of vault.

5.03 Lock bracket into vertical strut.

5.04 Attach second Plank Support in the same manner.

5.05 Place Pelsue Model 9504, 9506, 9504AL or 9506AL Plank over the Plank Supports.

5.06 Be sure to observe the load limits of both the Plank Supports and the Planks.

REMOVAL:

5.07 Remove Plank from Plank Supports.

5.08 Detach small tube of Plank Support from vertical strut and collapse Plank Support.

5.09 Attach safety strap to fix Plank Support in collapsed position.

5.10 Remove remaining end of Plank Support from vertical strut in vault.

5.11 Remove second Plank Support in the same manner.

6.0 MAINTENANCE

6.01 Check the Plank Supports for damage before each use. Damaged strut locks on the 309 Plank Support may be repaired by utilizing P/N 101226-001 Repair Kit.

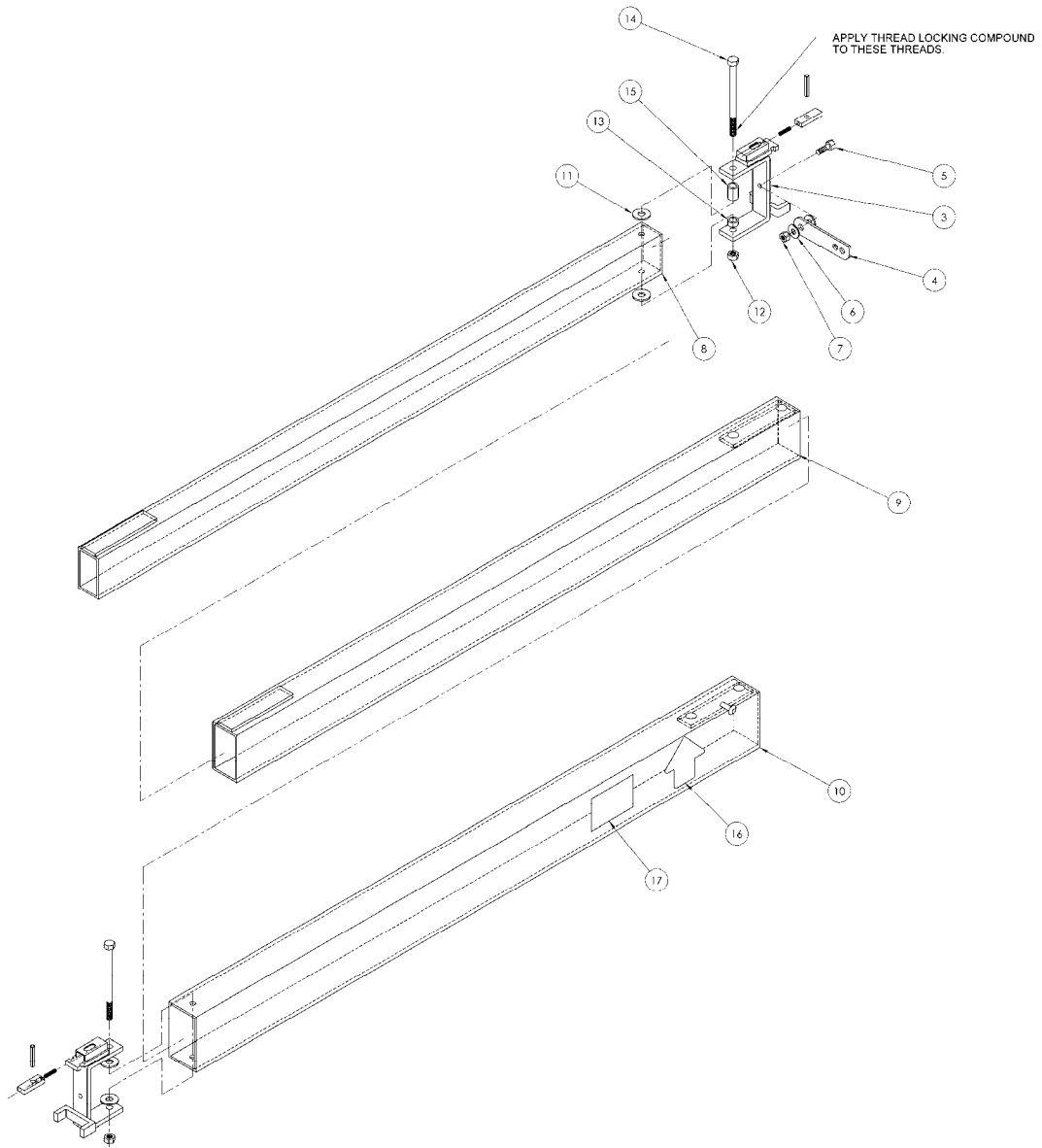
FOR PARTS AND SERVICE CONTACT:

T. A. PELSUE COMPANY
2500 SOUTH TEJON STREET
ENGLEWOOD, COLORADO 80110
PHONE: (303) 936-7432
IN USA: 1-800-525-8460
FAX: (303)-934-5581

7.0 PARTS LIST:

<u>ITEM#</u>	<u>PART #</u>	<u>DESCRIPTION</u>	<u>QTY.</u>
3	101311-001	Bracket Assembly "T" Lock (309)	2
3	101311-002	Bracket Assembly - Round Lug (310)	2
4	101262-001	Strap - Belting, Plank Holder	1
5	100604-008	Screw - Machine, Truss Head, 1/4-20 x 3/4	1
6	100050-009	Washer - Flat, 1/4", Plated	2
7	100060-010	Locknut - Hex, 1/4-20 Nylon Insert	1
8	118231-001	Weldment - Tube, Small	1
9	118232-001	Weldment - Tube, Medium	1
10	118233-001	Weldment - Tube, Large	1
11	100050-010	Washer - Flat, 5/16", Plated	4
12	100060-011	Locknut - Hex, 5/16-18, Nylon Insert	2
13	101319-001	Spacer - 1/4" Long	1
14	100157-020	Screw - Cap Hex Head 5/16-18 x 4.50	2
15	101319-002	Spacer - 3/4" Long	1
16	109348-001	Decal - Arrow, Red	1
17	102177-001	Decal - I.D. Serial # & Load Rating	1

MODEL # 309:



MODEL # 310:

